



Grendon Primary School
15th December 2025
Tel: 0121 474 2460
E-mail: enquiry@grendon.bham.sch.uk



Dear Parents and Carers,

In our last newsletter of the year; we would like to wish you all a very Merry Christmas and a Happy New Year.

My thanks to you all for all of your support this year.

We look forward to making 2026 another successful year for Grendon.

Best wishes
Mrs Ridley



Its that time of year....

Arrangements for School during Extreme Weather conditions

Should school be closed due to severe weather conditions it will be announced on local radio stations. It will also be announced on the school website: www.grendon.bham.sch.uk

A text message will also be sent from school so please keep school informed of any telephone number changes.



Christmas Event Timetable

16th December - *Nativity Assembly at 9:30am*



16th December - *Christmas Parties at 1:30pm*

19th December - *Christmas Jumper Day.*

19th December - *School Closes for Christmas at 1:30pm*

SCHOOL CLOSURES ON FRIDAY 19TH DECEMBER AT 1:30PM TO PUPILS AND STAFF!

Please make sure your child/ren are collected on time. There is no provision for late collections.

WE RE-OPEN TO PUPILS ON TUESDAY 6TH JANUARY. WE ARE CLOSED ON MONDAY 5TH FOR STAFF TRAINING.

Nativity Service - 16th December

It starts promptly at **9:30am**. Please wait in the side playground until the doors open at **9am**.

We will not admit anyone who arrives after 9:29am.

You will not be able to bring younger siblings including babies.

We look forward to seeing you.



Friday 19th December will be a Christmas Jumper Day to wear with your uniform i.e. normal uniform, but Christmas jumper instead of school jumper!

Christmas JUMPER DAY



Public Health Information

Emergency Department Pressures – Choose the Right Service

Due to [extreme pressures](#) across emergency departments this winter, schools are being asked to support with sharing the below important information.

Key message

Due to extreme pressures across emergency departments, please only attend the A&E if you're experiencing a life-threatening emergency. For help with minor healthcare needs, try these alternative options:

- Urgent Treatment Centres (UTCs): visit UTCs for support with common injuries and illnesses
- Pharmacy First: visit your [local pharmacy](#) for advice, guidance, and medication for common conditions
- NHS 111: call 111 or visit 111.nhs.uk for urgent, non-life-threatening medical advice 24 hours a day, 7 days a week
- GP practice: call or book an appointment with your GP

To find out more about how to choose the right service for your healthcare needs, visit <https://www.birminghamshull.icb.nhs.uk/health-information/choose-well>.

DATES FOR YOUR DIARY!

19 Dec	School closes for Christmas at 1:30pm
~	
05 Jan 26	School closed for teacher training
06 Jan	School re-opens to pupils at 8:40am
13 Jan	Reception Parent information meeting
15 Jan	Y3 Parent information meeting
20 Jan	Y6 Parent information meeting
22 Jan	Y5 Parent information meeting
26 Jan	Reception Vision screening at 9:30am
27 Jan	Y2 Parent information meeting
03 Feb	Parents Evening - details to follow
05 Feb	Parents Evening - details to follow
10 Feb	Junior Leader Day
13 Feb	Feel Good Friday
13 Feb	School closes for half term
23-26 Feb	Book Fair in School

Full details of all events will be sent out in advance
Our website is regularly updated with new events
Dates correct at time of going to print!

Local Authority Term Dates 2025 - 2026

Autumn Term 2025
Term Starts: Monday 1 September 2025
Half Term: **Monday 27 October to Friday 31 October**
Term Ends: Friday 19 December 2025

Spring Term 2026
Term Starts: Monday 5 January 2026
Half Term: **Monday 16 February to Friday 20 February**
Terms ends: Friday 27 March
Easter Break: Monday 30 March to Friday 10 April

Summer Term 2026
Term Starts: Monday 13 April
Half Term: **Monday 25 May to Friday 29 May**
Term Ends: Monday 20 July

Teacher Training Days when school is closed to pupils:

5th January 2026 & 20 July 2026.

ATTENDANCE & PUNCTUALITY

We are clear about our roles and responsibilities in ensuring your children's rights to their education. We aim to uphold every child's right to education, (Article 28 of the UN Convention on the Rights of the Child) by:

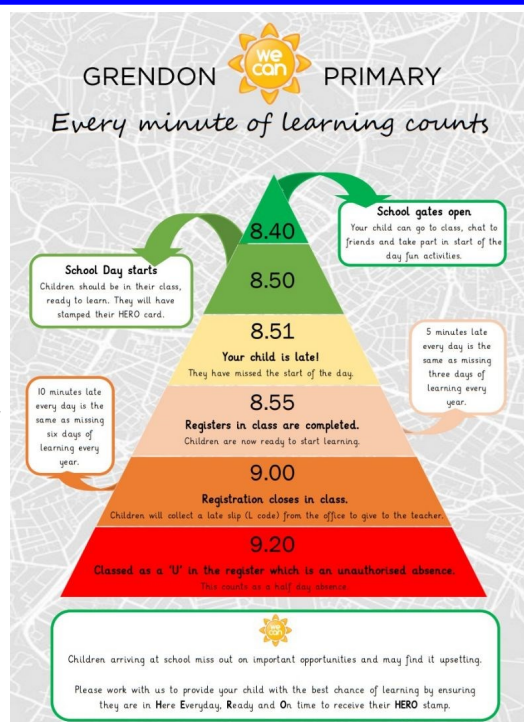
- promoting excellent attendance
- reducing absence, including persistent absence
- ensuring children are at school on time and ready to learn and in doing so, ensure our schools aims can be met, our vision achieved and our ethos realised.

Children who arrive after 8:50am must be brought to the office by a parent/carer to provide a reason. They will be marked as late (L) in the register. Although this code means that your child is present in school, they have missed the start to their learning for that day and will immediately have to catch up.

Children arriving after the register has closed at 9.20am will be marked with the (U) code. This is an unauthorised absence code, and means that your child will be marked as absent for that whole session. This will obviously affect your child's attendance percentage, but more importantly, means that they have missed a significant part of their learning for that morning and will have to catch up.

Poor punctuality can lead to your child:

- feeling embarrassed in front of friends
- missing the beginning of vital lessons
- missing important instructions for the rest of the school day
- learning bad habits which could affect employability in the future



The following link gives advice about when you should keep your child off school, and for how long;

<https://www.nhs.uk/live-well/is-my-child-too-ill-for-school/>

If you are unsure, please seek medical advice and stay in touch with school.

What do I do if my child is unwell?

Please phone school and provide a reason for absence by 9:30am on the day of their absence.

SWIMMING

Year 4 will be swimming after Christmas.

4G will swim on Tuesday
4J will swim on Friday



We do appreciate how busy Grendon Road is during peak times, but ask you not to park on the yellow zigzags outside the school gates or on the pavement. The children's safety is put at risk when this occurs and you need to consider this when dropping off and collecting your children. **DO NOT PARK OVER DRIVEWAYS OR BLOCK PATHWAYS.**

We constantly receive complaints from local residents and ask that you be considerate when parking your car. Residents have been advised to contact Billesley Police with any parking issues/abusive behaviour.
Thank you for your co-operation



Toilets

Please be aware we do not have toilets for public use.



Office Opening Hours



8:40 - 9:00am
3:10 - 3:30pm



No electronic cigarettes